

Luxury Elevators for Homes & Villas

Elevate Your Home with Comfort and Style

A home or villa lift enhances convenience, elegance, and accessibility, seamlessly connecting floors while complementing your home's style. Ideal for seniors and families, it simplifies tasks, adds sophistication to interiors, and increases property value, blending luxury and practicality for a modern, refined living experience.



Standout Qualities

- ▶ **Compact Design:** Space-saving solutions, ideal for homes with limited installation areas.
- ▶ **Customizability:** Tailored interiors, cabin sizes, and finishes to match individual home styles.
- ▶ **Energy Efficiency:** Eco-friendly technologies, such as regenerative energy systems and low power consumption.
- ▶ **Enhanced Accessibility:** Accommodates wheelchairs, wider doors, and user-friendly controls for all family members.
- ▶ **Safety Assurance:** Advanced safety features, including automatic braking, emergency stops, and battery backup.
- ▶ **Seamless Integration:** Compatible with smart home systems for voice or app-based control.
- ▶ **Aesthetic Appeal:** Options like panoramic glass, customizable lighting, and sleek designs enhance home elegance.
- ▶ **Ease of Installation:** Quick setup with minimal structural modifications, suitable for retrofits.
- ▶ **Durability and Low Maintenance:** High-quality components ensure long-lasting performance with reduced upkeep costs.
- ▶ **Quiet and Comfortable Operation:** Low noise levels with smooth starts and stops for an exceptional user experience.

Essential Characteristics

- ▶ **Low Headroom Requirement:** "No headroom" requirement.
- ▶ **Low Pit Installation:** Designed with minimal pit depth requirements, making it ideal for homes where excavation space is limited or foundation alterations need to be minimal.
- ▶ **Smooth and Silent Operation:** Advanced motor and drive technology ensures quiet, seamless rides.
- ▶ **Fast Installation:** Minimal structural changes required for quick and hassle-free setup.
- ▶ **Customizable Interiors:** Wide range of colors, materials, and finishes to suit home décor.
- ▶ **Enhanced Load Capacity:** Options for higher weight capacities to meet diverse needs.
- ▶ **Panoramic Glass Options:** Modern designs with increased visibility and open-air aesthetics.
- ▶ **Soft Start and Stop:** Advanced drive systems for smooth acceleration and deceleration.
- ▶ **Low Noise Levels:** Enhanced sound insulation ensures quiet operation.
- ▶ **Variety of Door Configurations:** Swing, sliding, or folding door options to match different layouts.
- ▶ **Customizable Door Finishes:** Stainless steel, wood, and powder-coated options for a cohesive look.
- ▶ **Quick Travel Time:** Optimized speed settings for efficient movement between floors.



Integrated Car Door Lock (CDL): Automatically secures the elevator doors if the lift halts between floors, ensuring added safety.



Dependable Hoisting System: Utilizing advanced rope technology, this system ensures durability and easy maintenance for reliable performance.



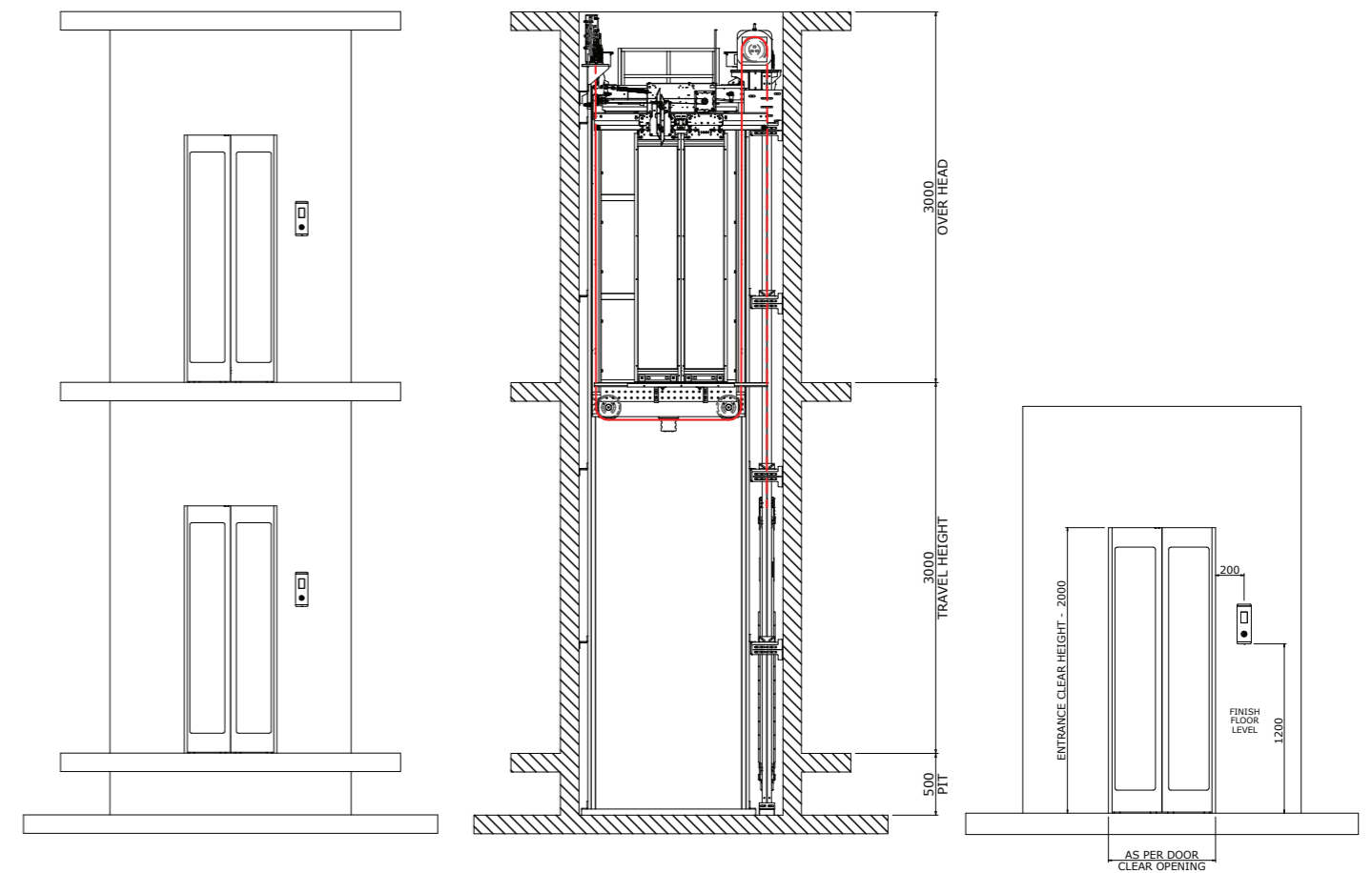
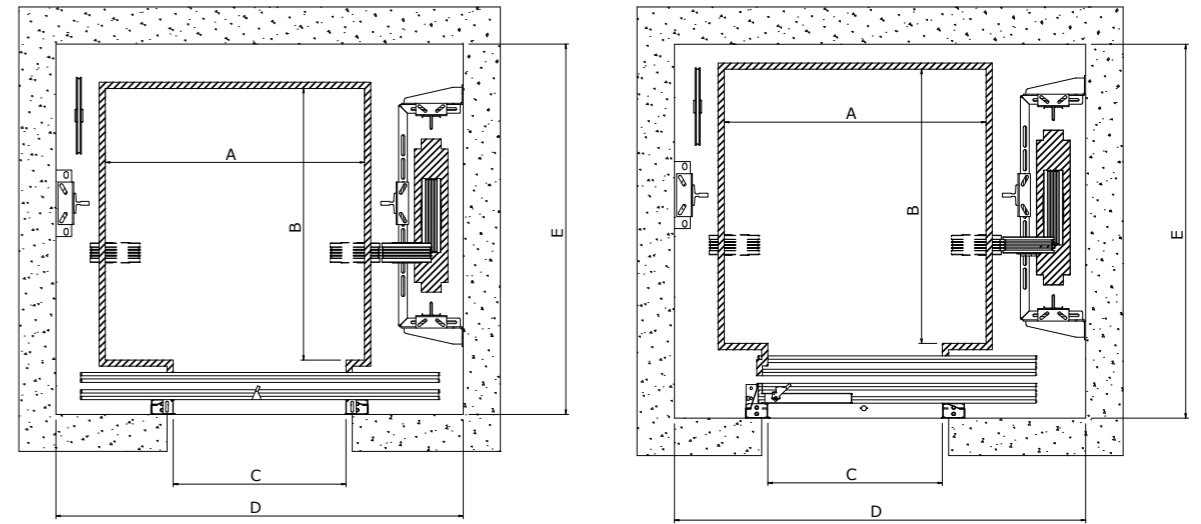
Full-Height Door Sensors: A protective curtain of light monitors the doorway, ensuring safe and secure entry and exit for passengers.



Optional Emergency Rescue Device: In case of power outages, this feature automatically moves the elevator to the nearest floor, ensuring a safe exit.



Precision Levelling: The closed-loop drive system ensures perfect levelling accuracy, minimizing the risk of trips and falls when entering or exiting the elevator.



Technical Specifications

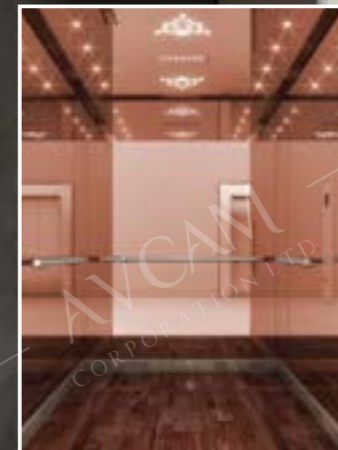
Automatic Center Opening Door Passenger Lifts						
No. of Persons	Rated Capacity	Entrance Width	CAR Size in MM		Hoistway Size in MM	
			Width	Depth	Width	Depth
	KG	C	A	B	D	E
4	272	700	900	875	1500	1300
6	408	700	1050	1100	1650	1500

Automatic Side Opening Door Passenger Lifts						
No. of Persons	Rated Capacity	Entrance Width	CAR Size in MM		Hoistway Size in MM	
			Width	Depth	Width	Depth
	KG	C	A	B	D	E
4	272	700	900	875	1500	1375
6	408	700	1050	1100	1650	1500

A Journey Inside Luxurious Cabin Interiors

An elevator cabin is no longer just a functional aspect of a building—it's an integral part of the overall design and ambiance. Modern elevator cabins are crafted to reflect both elegance and sophistication, enhancing the visual appeal of any space. With sleek, contemporary finishes, customizable designs, and high-quality materials such as polished stainless steel, glass, wood, and even marble, the cabin becomes a true extension of your interior style. Soft, ambient lighting creates a warm and welcoming atmosphere, while advanced touch interfaces and smooth finishes provide a seamless user experience.

Every detail of the cabin is meticulously designed, not only for comfort but to elevate the aesthetic appeal of your home or building. Whether it's a minimalist, modern look or a more classic and luxurious design, the elegance of the elevator cabin enhances the environment, offering passengers a sense of refinement and style. Beyond mere functionality, it turns each ride into a stylish and enjoyable experience that complements the overall architectural vision of the space.



Door Vision

Elevator door vision panels offer a glimpse into elegance, blending transparency and style to create an inviting entryway that elevates your experience.



(Without Vision)



(Small Vision)



(Long Vision)



(Half Vision)



(Full Vision)



(Frameless Vision)

Luxurious LOP touch

Experience the elegance of effortless movement with our elevator's luxurious LOP touch, where every ride feels like a seamless embrace.



Different Available Finishes

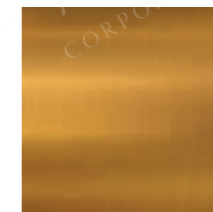
Elevator door color shades transform every entrance into a captivating statement, reflecting your unique style while inviting you to a world of elegance.



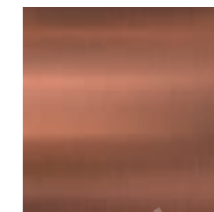
MS Powder Coated Finish



SS 304 Hairline Finish



SS 304 Gold Hairline Finish



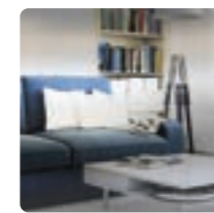
SS 304 Rose Gold Hairline Finish



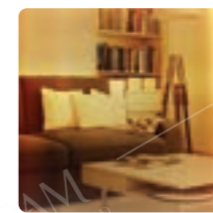
SS 304 Black Hairline Finish



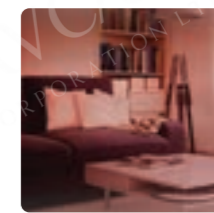
MS Powder Coated Wooden Finish



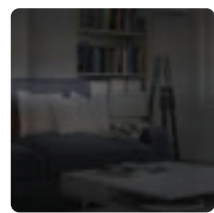
SS 304 Mirror Finish



SS 304 Gold Mirror Finish



SS 304 Rose Gold Mirror Finish



SS 304 Black Mirror Finish

INFRASTRUCTURE that Inspires

A V Cam Elevator Company is a leader in India's elevator industry, featuring one of the largest infrastructures and machinery workshops in the country. Spanning an impressive 4,60,000 square feet, this state-of-the-art facility is equipped with the latest technology and advanced automation, allowing for precision and efficiency in production. With a dedicated workforce of over 250+ skilled employees, A V Cam ensures that every aspect of the manufacturing process meets the highest standards of quality and innovation. The company's commitment to integrating cutting-edge technology into its operations not only enhances productivity but also positions A V Cam as a key player in the evolving elevator market. By continuously investing in modern machinery and fostering a talented workforce, A V Cam is well-equipped to meet the growing demands of the industry while delivering exceptional products and services to its clients.



**One of the largest
state-of-the-art
manufacturing
facilities in India's
elevator industry.**



4,60,000
Square Feet's

we are a family of
250+

300+
Door manufacturing
capacity per day





Manufacturing Plant & Office

Survey No. 503, Majara-Talod Road,
Gujarat State Highway 143, TA. PRANTIJI
Opp. Kashtabhanjan Petroleum (NAYARA Petrol Pump),
Dist. Sabarkantha, Ghadkan, Gujarat 383 205.



Location Map

- ✉ info@avcamcorporation.com
- 🌐 www.avcamcorporation.com
- ☎ +91 98250 19838, +91 97651 66169

Our Virtual Presence



website



facebook



linkedin



instagram



twitter



pinterest



youtube



whatsapp

Disclaimer : The data contained within this catalog is subject to change, errors and printing errors; any liability is excluded. Technical data in particular is subject to change without prior notification. Images are not exact and may contain minor deviations from the original.