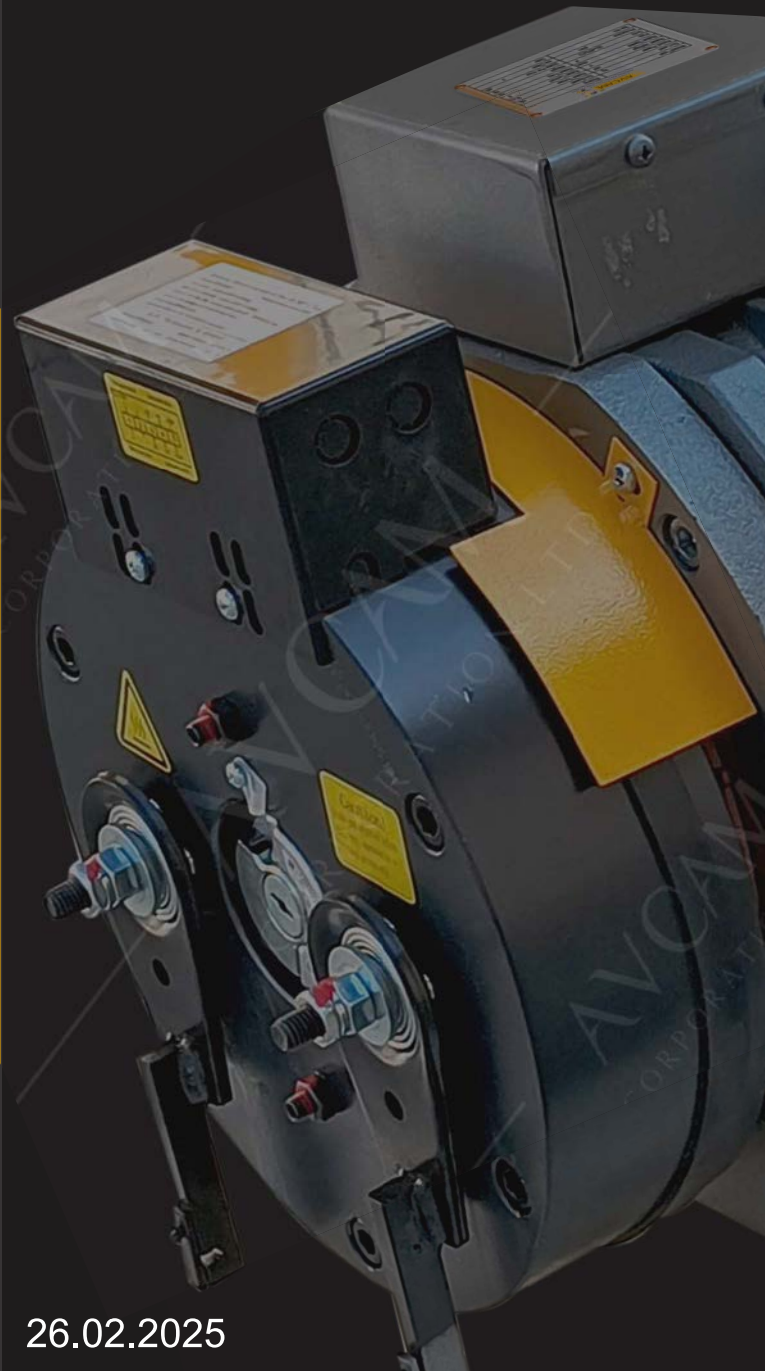




GEARLESS TRACTION MACHINE

COMPLETE ELEVATOR AND ELEVATOR
SPARES SOLUTION UNDER ONE ROOF

“Assuring Safety,
Inspiring Future”

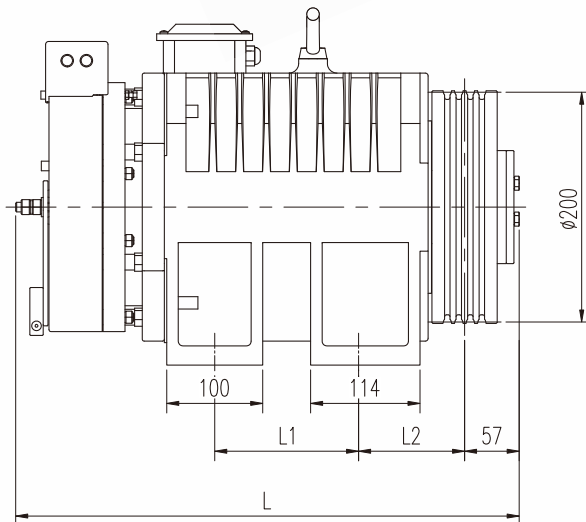
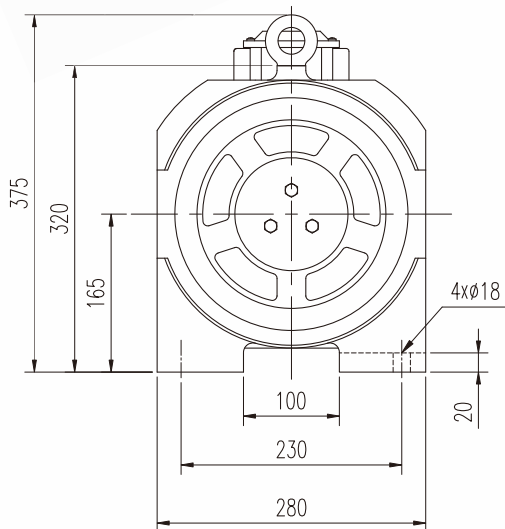


26.02.2025

GEARLESS TRACTION MACHINE

Permanent Magnet Synchronous Motor

AVC200 - 408Kg (200-DIA) SINGLE PHASE

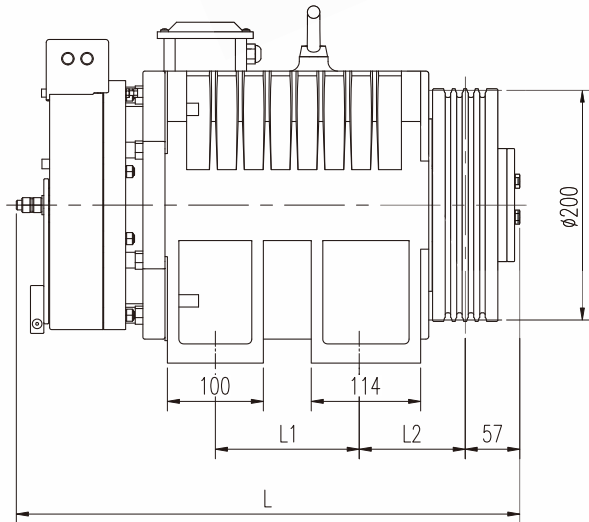
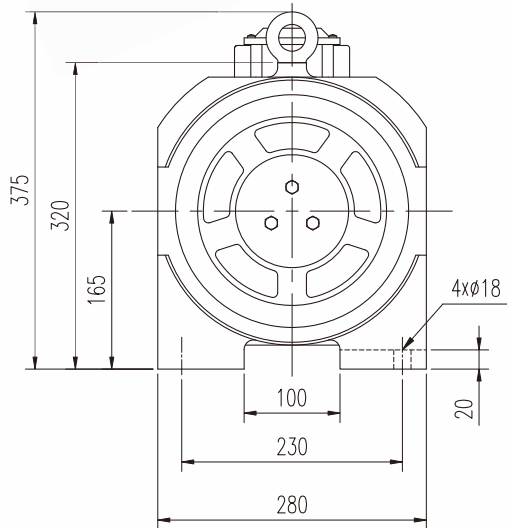
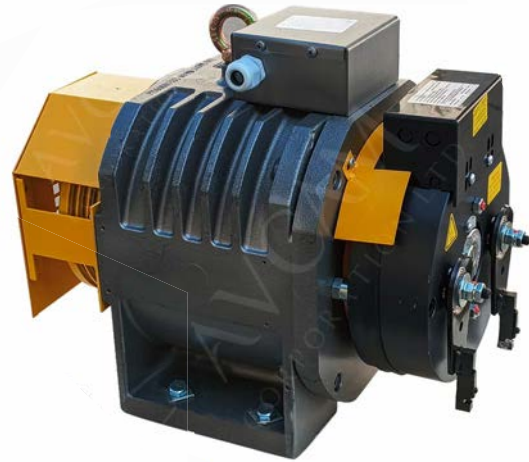


Voltage	Power (kw)	Current	Speed (RPM)	Speed (M/S)	Frequency (Hz)	Torque (Nm)	Pole	Insulation Class	Break Voltage	β-Angle	Passenger Load (kg)
220	1.8	8	122	0.64	16.3	140	16	F	110DC	90	408
Static Load (kg)	Sheave Dia(mm)	Sheave Groove	Rope Dia (mm)	Ropping	L(mm) As per Drawing	L1(mm) As per Drawing	L2(mm) As per Drawing	IP Code	Duty	Machine Weight	
2500	200 mm	4 Nos.	8 mm	2:1	430 mm	100 mm	100 mm	Ip41	S5-40%ED	200	

GEARLESS TRACTION MACHINE

Permanent Magnet Synchronous Motor

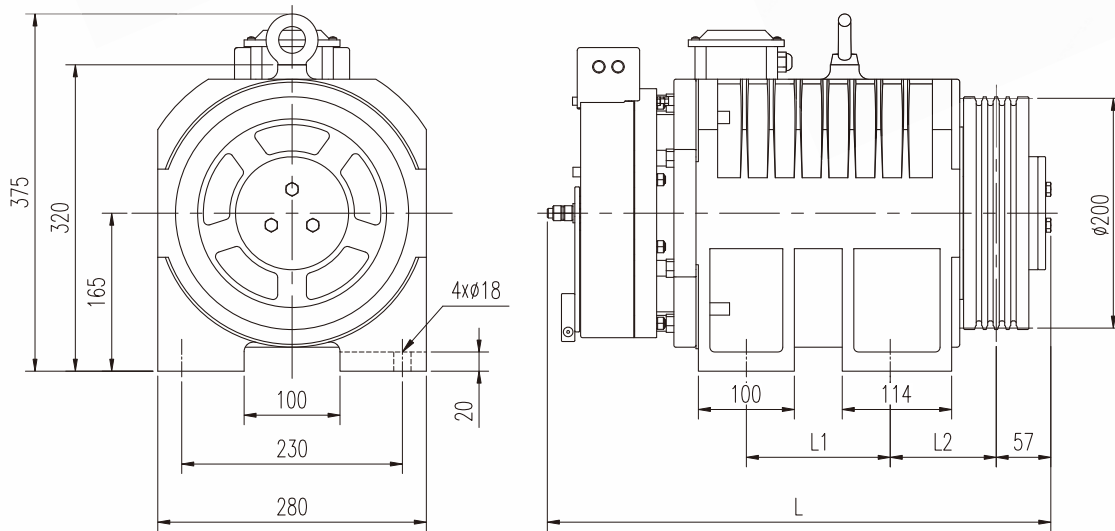
AVC200 - 408Kg (200-DIA) THREE PHASE



Voltage	Power (kw)	Current	Speed (RPM)	Speed (M/S)	Frequency (Hz)	Torque (Nm)	Pole	Insulation Class	Break Voltage	β-Angle	Passenger Load (kg)
380	3.0	8	191	1:0	25.5	150	16	F	110 DC	90	450
Static Load (kg)	Sheave Dia(mm)	Sheave Groove	Rope Dia (mm)	Ropping	L(mm) As per Drawing	L1(mm) As per Drawing	L2(mm) As per Drawing	IP Code	Duty	Machine Weight	
2500	200 mm	4 Nos.	8 mm	2:1	430 mm	100 mm	100 mm	Ip41	S5-40%ED	200	

GEARLESS TRACTION MACHINE

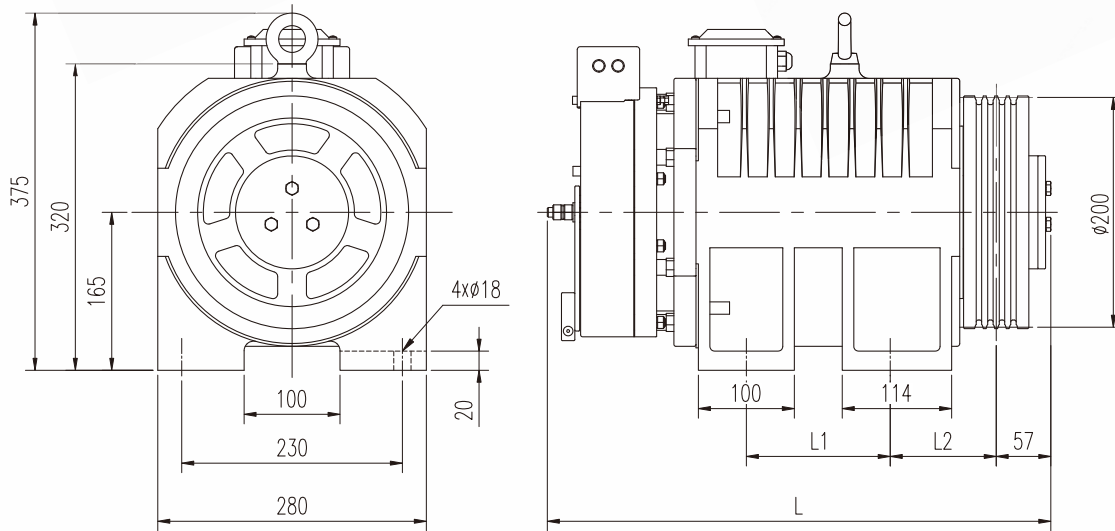
Permanent Magnet Synchronous Motor
AVC200 - 450Kg (320-DIA) THREE PHASE



Voltage	Power (kw)	Current	Speed (RPM)	Speed (M/S)	Frequency (Hz)	Torque (Nm)	Pole	Insulation Class	Break Voltage	β-Angle	Passenger Load (kg)
380	3.0	9	119	1.0	23.8	240	24	f	110DC	90	450
Static Load (kg)	Sheave Dia(mm)	Sheave Groove	Rope Dia (mm)	Ropping	L(mm) As per Drawing	L1(mm) As per Drawing	L2(mm) As per Drawing	IP Code	Duty	Machine Weight	
2500	320 mm	5 Nos.	8 mm	2:1	520 mm	150 mm	110	IP-41	S5-40%ED	200	

GEARLESS TRACTION MACHINE

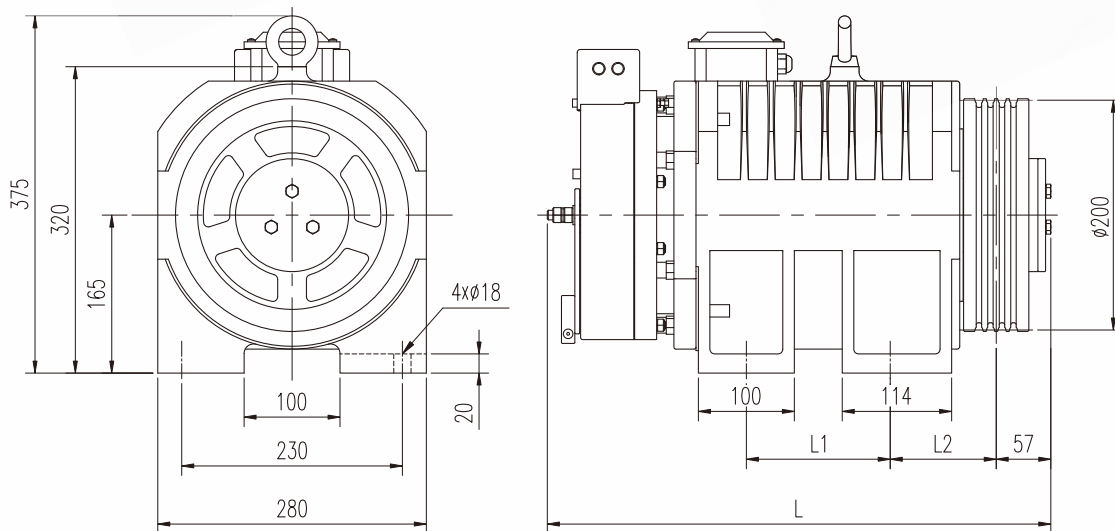
Permanent Magnet Synchronous Motor
AVC200 - 544Kg (320-DIA) THREE PHASE



Voltage	Power (kw)	Current	Speed (RPM)	Speed (M/S)	Frequency (Hz)	Torque (Nm)	Pole	Insulation Class	Break Voltage	β-Angle	Passenger Load (kg)
380	3.7	9	119	1.0	15.9	300	16	F	110DC	90	544
Static Load (kg)	Sheave Dia(mm)	Sheave Groove	Rope Dia (mm)	Ropping	L(mm) As per Drawing	L1(mm) As per Drawing	L2(mm) As per Drawing	IP Code	Duty	Machine Weight	
2500	320 mm	5 Nos.	8 mm	2:1	520 mm	150 mm	110 mm	IP-41	S-40%ED	200	

GEARLESS TRACTION MACHINE

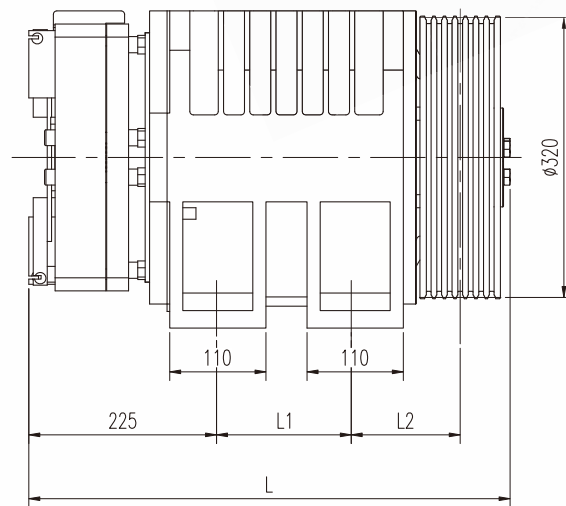
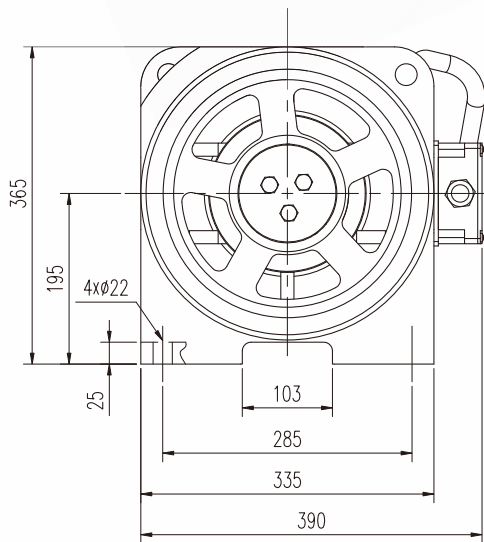
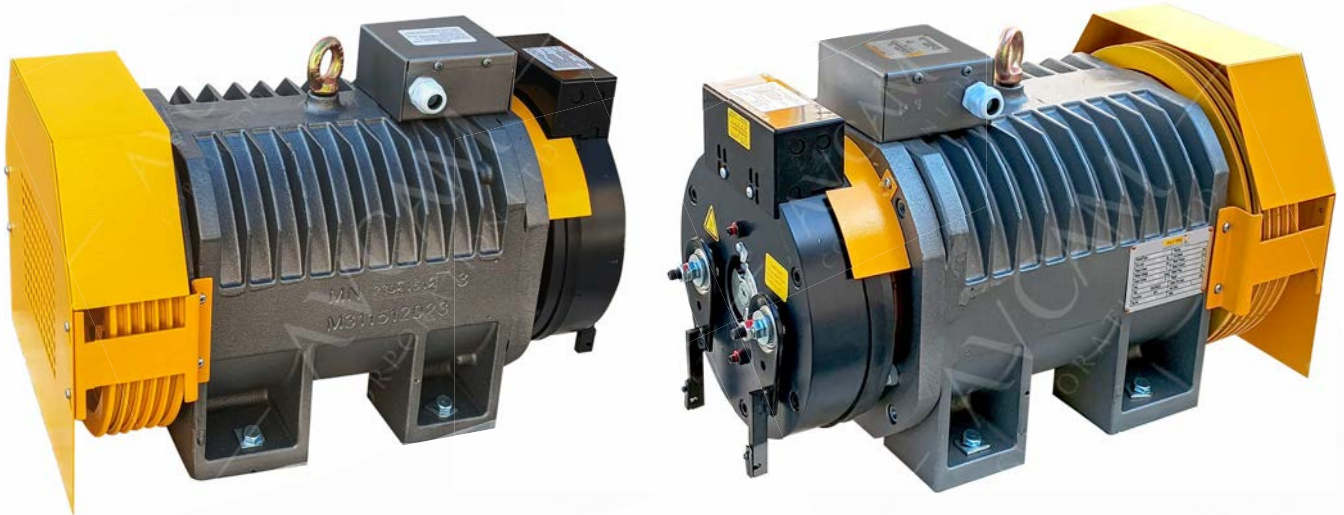
Permanent Magnet Synchronous Motor
AVC200 - 630Kg (320-DIA) THREE PHASE



Voltage	Power (kw)	Current	Speed (RPM)	Speed (M/S)	Frequency (Hz)	Torque (Nm)	Pole	Insulation Class	Break Voltage	β-Angle	Passenger Load (kg)
380	4.2	11	119	1.0	23.8	340	24	F	110DC	90	630
Static Load (kg)	Sheave Dia(mm)	Sheave Groove	Rope Dia (mm)	Ropping	L(mm) As per Drawing	L1(mm) As per Drawing	L2(mm) As per Drawing	IP Code	Duty	Machine Weight	
2500	320 mm	5 Nos.	8 mm	2:1	570 mm	200 mm	110 mm	IP-41	S-40%ED	200	

GEARLESS TRACTION MACHINE

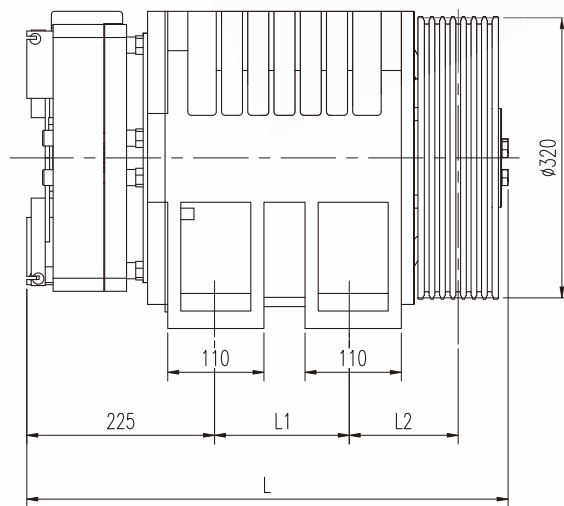
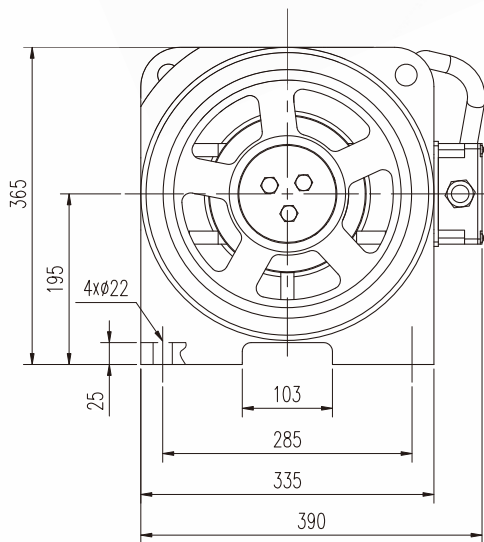
Permanent Magnet Synchronous Motor
AVC320 - 800Kg (320-DIA) THREE PHASE



Voltage	Power (kw)	Current	Speed (RPM)	Speed (M/S)	Frequency (Hz)	Torque (Nm)	Pole	Insulation Class	Break Voltage	β-Angle	Passenger Load (kg)
380	5.4 kw	13	119	1.0	23.8	430	24	F	110VDC	90	800
Static Load (kg)	Sheave Dia(mm)	Sheave Groove	Rope Dia (mm)	Ropping	L(mm) As per Drawing	L1(mm) As per Drawing	L2(mm) As per Drawing	IP Code	Duty	Machine Weight	
3500	320 mm	6 Nos.	8 mm	2:1	550 mm	154 mm	124.5 mm	IP-41	S-40%ED	295	

GEARLESS TRACTION MACHINE

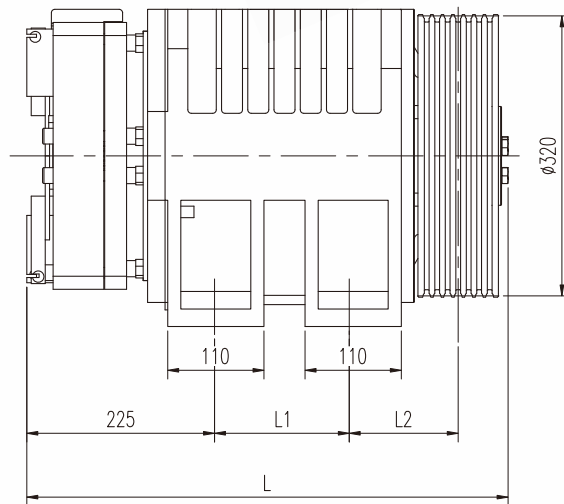
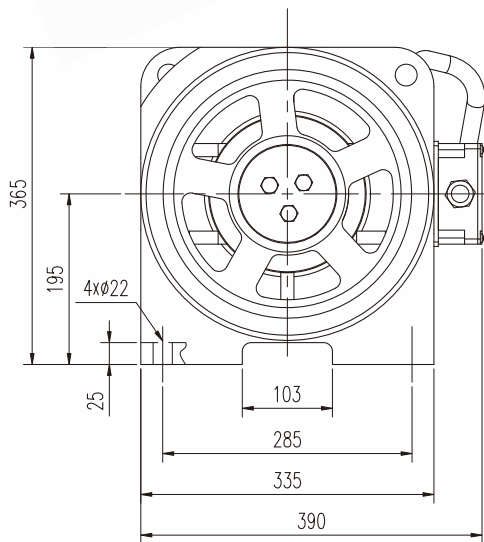
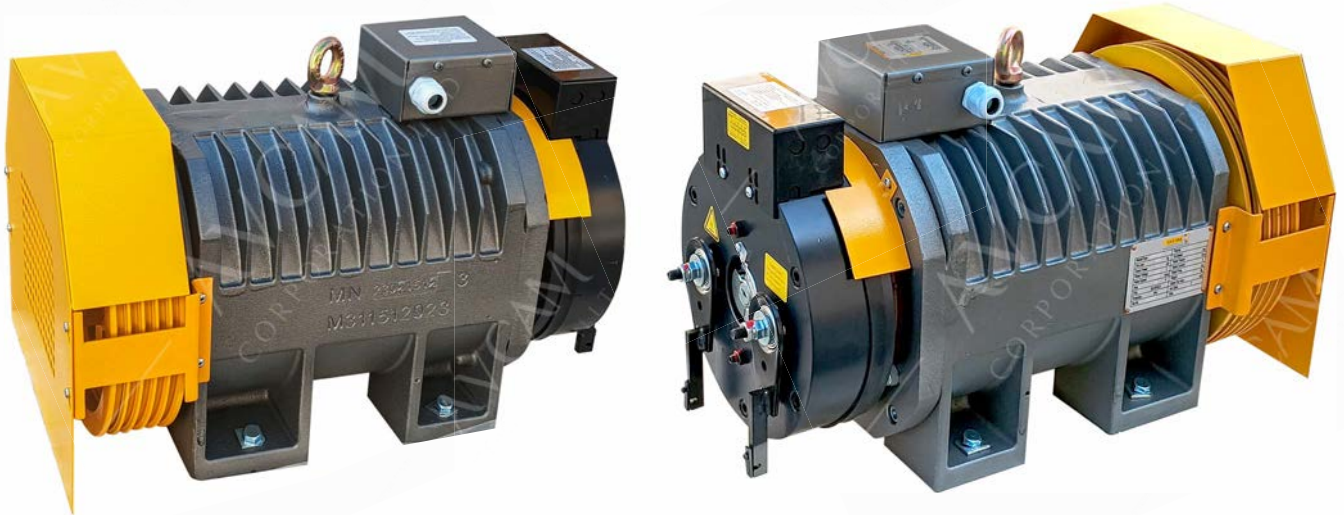
Permanent Magnet Synchronous Motor
AVC320 - 1000Kg (320-DIA) THREE PHASE



Voltage	Power (kw)	Current	Speed (RPM)	Speed (M/S)	Frequency (Hz)	Torque (Nm)	Pole	Insulation Class	Break Voltage	β-Angle	Passenger Load (kg)
380	6.7	16	119	1.0	23.8	540	24	F	110DC	90	1000
Static Load (kg)	Sheave Dia(mm)	Sheave Groove	Rope Dia (mm)	Ropping	L(mm) As per Drawing	L1(mm) As per Drawing	L2(mm) As per Drawing	IP Code	Duty	Machine Weight	
3500	320 mm	7 Nos.	8 mm	2:1	590 mm	194 mm	130 mm	IP-41	S-40%ED	295	

GEARLESS TRACTION MACHINE

Permanent Magnet Synchronous Motor
AVC320 - 1150Kg (320-DIA) THREE PHASE



Voltage	Power (kw)	Current	Speed (RPM)	Speed (M/S)	Frequency (Hz)	Torque (Nm)	Pole	Insulation Class	Break Voltage	β-Angle	Passenger Load (kg)
380	7.9	18	119	1.0	23.8	630	24	F	110DC	90	1150
Static Load (kg)	Sheave Dia(mm)	Sheave Groove	Rope Dia (mm)	Ropping	L(mm) As per Drawing	L1(mm) As per Drawing	L2(mm) As per Drawing	IP Code	Duty	Machine Weight	
3500	320 mm	8 Nos.	8 mm	2:1				IP-41	S5-40%ED	295	



Manufacturing Plant & Office

Survey No. 503, Majara-Talod Road,
Gujarat State Highway 143, TA. PRANTIJI
Opp. Kashtabhanjan Petroleum (NAYARA Petrol Pump),
Dist. Sabarkantha, Ghadkan, Gujarat 383 205.



Location Map

- ✉ info@avcamcorporation.com
- 🌐 www.avcamcorporation.com
- ☎ +91 98250 19838, +91 97651 66169

Our Virtual Presence



website



facebook



linkedin



instagram



twitter



pinterest



youtube



whatsapp

Disclaimer : The data contained within this catalogue is subject to change, errors and printing errors; any liability is excluded. Technical data in particular is subject to change without prior notification. Images are not exact and may contain minor deviations from the original. Unauthorized reproduction or distribution of photos or technical data is prohibited and may result in legal action.